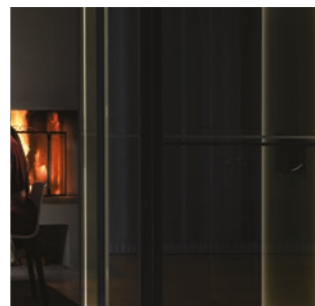


HomeLift Modern Living

GARTEC
home



Founded in 1994, Gartec is one of the longest established platform lift companies in the UK. Through installing more than 6,000 platform lifts to date (more than any other company), our experience means we have almost certainly worked on a project like yours.

Gartec Home are a sister company to the commercial lift company Gartec, offering clients a more refined domestic service when it comes to buying and installing a lift. When it comes to making your property more versatile, Gartec Home lifts are an effective and stylish solution to secure you in your home, forever. Every lift is bespoke to your needs, to give you flexibility to access different floors, whilst retaining the aesthetics inside your home and avoiding costly renovation. Installing a lift even adds value to the property, as it immediately makes a house accessible to everyone.

All images used by courtesy of Aritco Lift AB

'Home lift technology has come a long way since its early days. It looks better, performs better and is more cost efficient.'



Good design has the power to enhance life

We introduce the world's first of its kind, exclusively designed for private homes. Developed and made in Sweden, it has quality and simplicity at its heart. Customizable and efficient thanks to innovative engineering, it fits in every home, anywhere in the world. Not only does it raise the overall interior with unique style and lighting – it elevates living. It is innovation for the ever-changing, the forward-thinking. For those who dream of paving the way.

We know every home is unique, and your home is a special place for you. You have picked every colour, every piece of furniture and every bit of decoration to create a home that is designed for your family, for your life and for your comfort. A home lift from Gartec is designed to be that extra feature of your home. It is decorative and is a spectacular design feature, which makes your home unique. It provides you with that extra feeling of luxury, and it ignites the full potential of your home.



'By making some of your own choices for your lift, it will fit nicely into your interior or turn it into a spectacular piece of furniture.'

There is a big difference between those things in your home that just serve a practical purpose and those that have been specially designed with you in mind, as the homeowner and the user. These are the things that add extra value and make your life easier and more joyful.

Aritco HomeLift is the first lift that is designed with the homeowner and the private residence in focus. The state-of-the-art design is a joy to the eye. It has a DesignWall with a luxury design not like any other product on the market.

Some of Scandinavia's most prominent designers and artists have selected art that you can add to the DesignWall. This makes your home lift not merely a problem solver, but a real piece of art in your home.

The home lift is also designed to be space efficient, to make the most out of every square metre of your home. Our smallest model takes up no more space than a wardrobe.

Sweden is well known for its focus on sustainability and the environment. Aritco HomeLift is 95% recyclable and has lower energy consumption than an average washing machine.

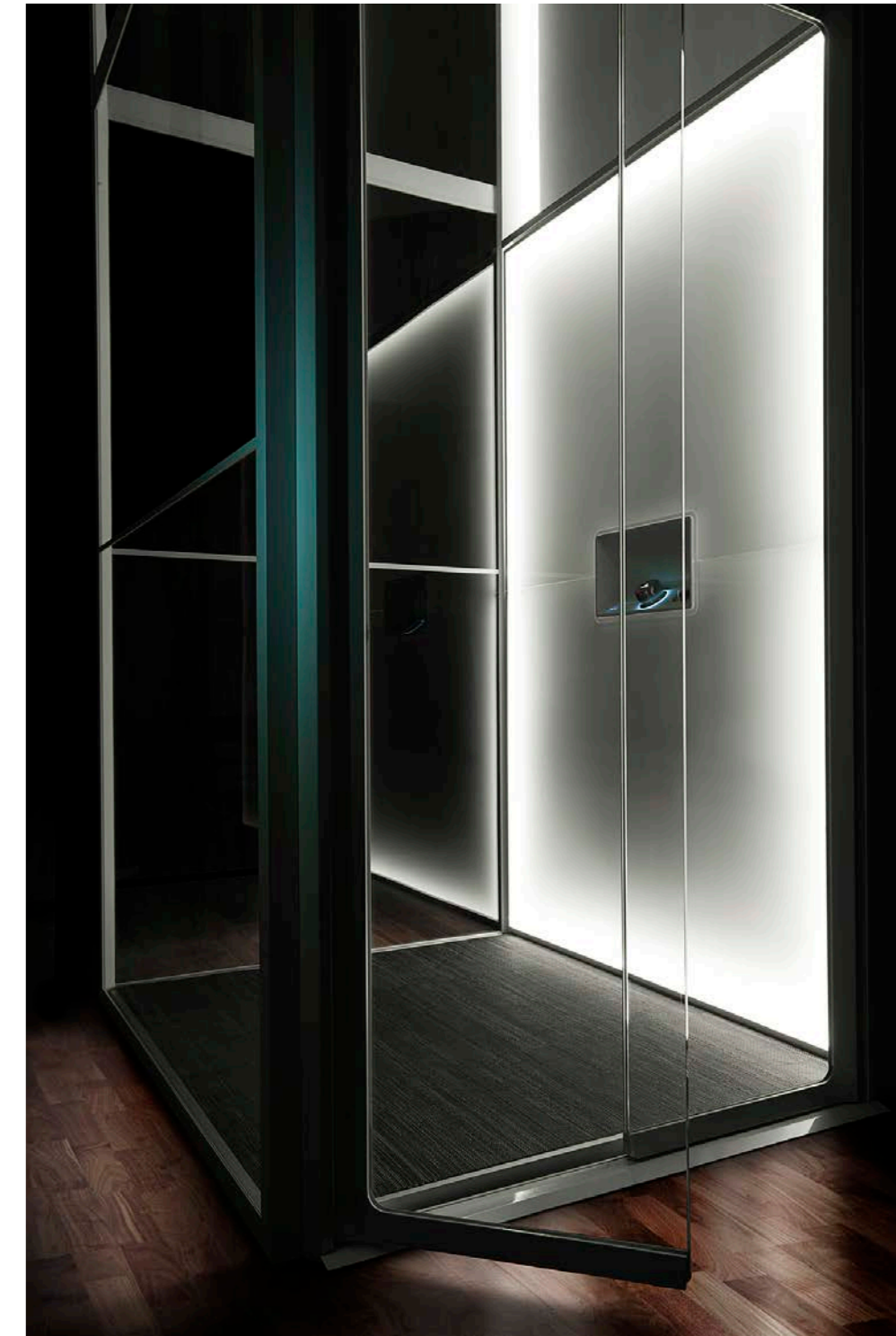


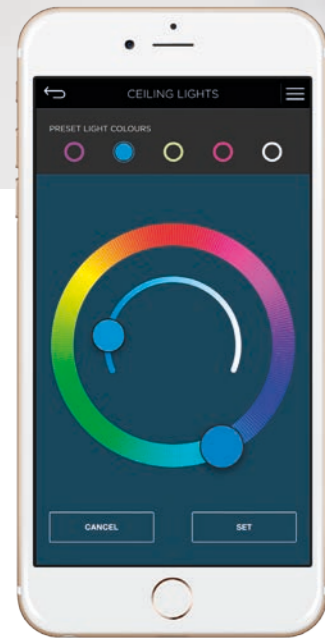
With a home lift in your home, everyone will feel welcome. Those who don't need to use the lift want to do it anyway, because of the pleasant feeling of entering a room with elegance.

Aritco HomeLift has been designed with both safety and reliability in focus: to meet all kinds of situations that can occur in a home, as well as to prevent accidents. Children may play in the lift and in its vicinity. Therefore, we have smart doors and safety sensors so that small fingers cannot get hurt. You can also activate a lock, so that the children cannot use the lift when adults are not present.

The drive system is a well-tested and reliable screw and nut system that brings the carrier up and down. In addition, we have safety breaks, so that you can always get out of the lift, including during a power failure in the home. All of these safety details are included in our SmartSafety system. For Aritco, it goes without saying that we follow the most stringent requirements and directives for safety.

By designing every detail with care, we have produced a product with a fantastic finish that is reliable and has a long lifetime. Aritco HomeLift has one of the lowest maintenance costs on the market.





With the Aritco SmartLift app installed on your phone or tablet you can easily set the lighting to fit your mood.

- 1 The DesignWall in the lift has a luxurious and unique design. It is, by itself, a piece of art.
- 2 The Landing Indicator shows your current location and your destination floor.
- 3 The Signature Controller works like an i-drive system, a rotary dial to select the destination and a press of the controller to confirm drive. Classic design delivering outstanding quality.
- 4 Voice Annunciation of the landing and door operation is programmable on installation of the lift
- 5 Communication from inside the lift to outside can be delivered by one of three ways; Intercom, Telephone system or autodialler system (hands free telephoning).
- 6 SMART Lift – inside every lift is a GSM module which allows live lift data to be fed to your mobile phone App. The SMART Lift App also offers many confrontation options for your to personalise the lift.

FLOOR

We know that every home looks different and understand that you want to design your lift so that it matches all parts of your home. You can easily see how your lift will look like when using our "build your lift" at www.aritcohomelifts.com.

Choose where there should be glass walls or covered walls, where the doors will be placed and what colours you want. The walls of the lift can be either covered or of clear or tinted glass. The walls, frames and doors can be painted in different colours to fit your personal style.

The floor of the lift adds an extra touch to the design. You have a number of handpicked floors to choose from that match the colours and the DesignWall of the lift. Your own personal choice is also possible.



COLOUR YOUR LIFT

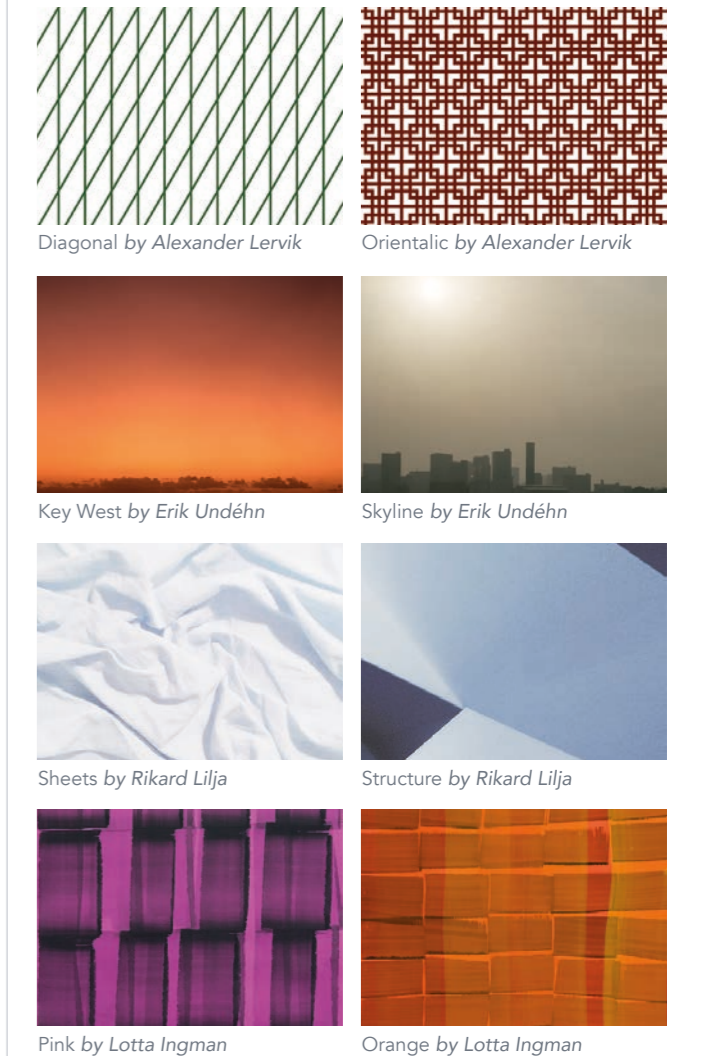
STANDARD Whole lift painted in standard colour RAL 9016 (traffic white)

OPTIONS Whole lift painted in an optional colour. Walls painted in an optional colour. Doors painted in an optional colour.



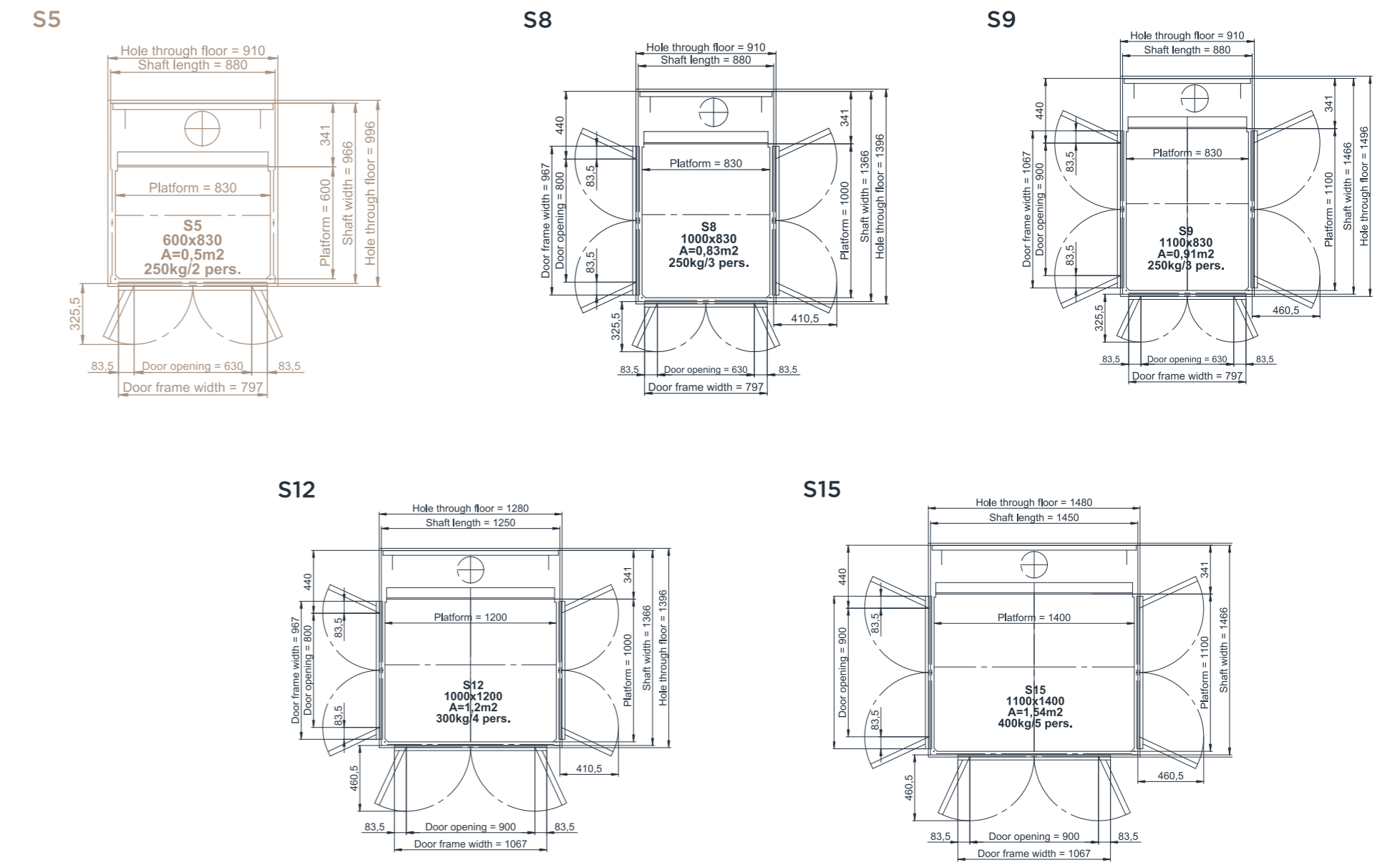
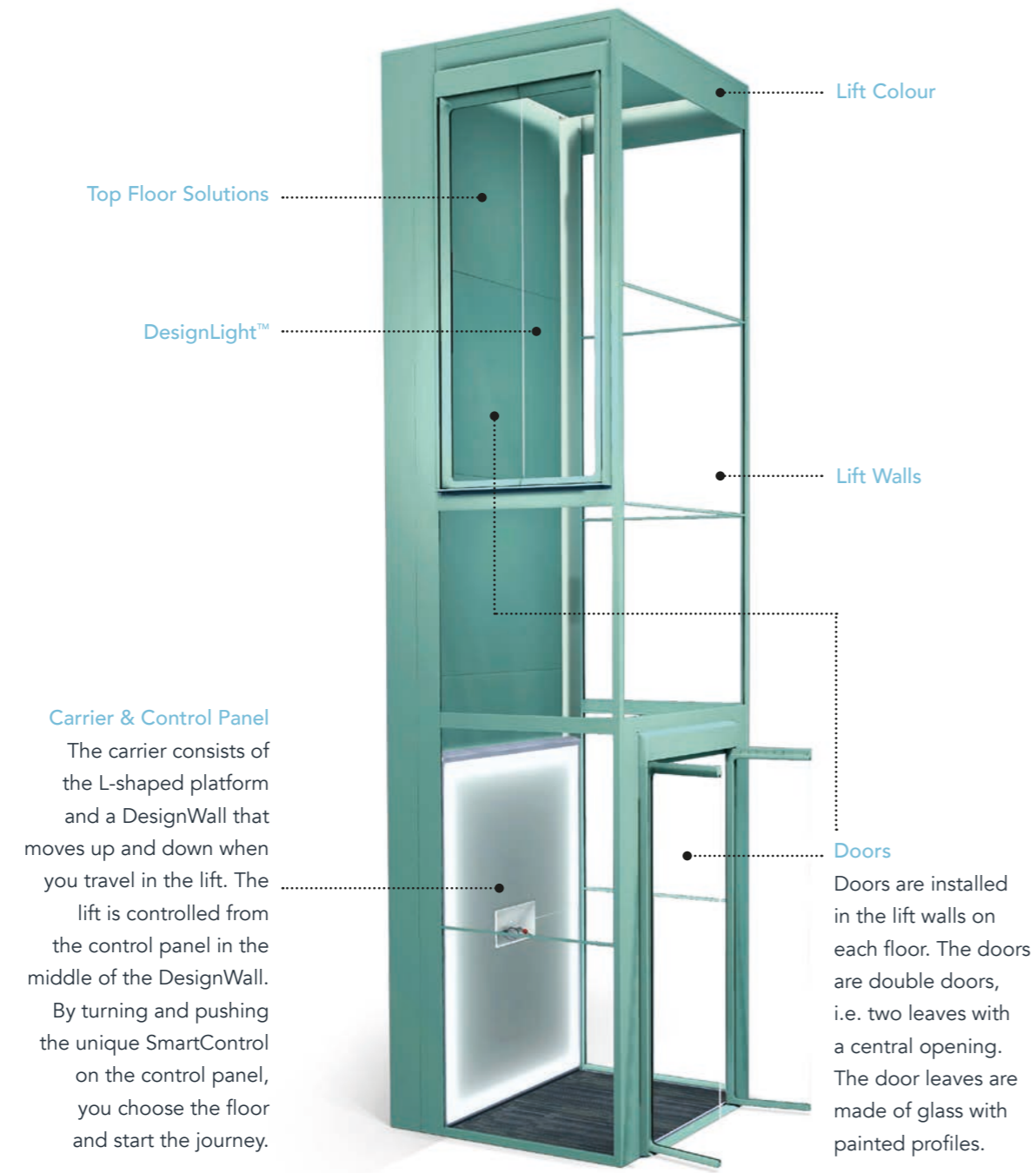
DESIGNWALL™

In addition to the standard white DesignWall the following different patterns and pictures are available as option.



ARITCO HOME LIFT

Type of Lift	Home lift intended for installation in private homes
Technical Compliance	European Machine Directive 2006/42/EC European Standard EN 81-41
Drive System	Screw/Nut System
Installation Environment	Indoor
Travel Height	250-15,000 ¹ mm 1) With PanoramDesign™ concept max 3000mm for installations in Europe
Top Height	Minimum 2225mm to 3000mm ¹
Number of Floors	2 to 6 floors
Installation	Recessed installation (pit): Installed 40mm below floor. Installed directly on floor: with 40mm ramp
Control from carrier control panel	Hold to run - press to hold For installations outside Europa: One touch operation (press one time)
Control from call button	One touch operation (press one time)
Rated speed	Max 0.15m/s Max 0.30m/s for installations outside Europe
Carrier sizes and rated load	S5: 600 x 830 mm 250 kg / 2 persons S8: 1000 x 830 mm 250 kg / 3 persons S9: 1100 x 830 mm 250 kg / 3 persons S12: 1000 x 1200 mm 300 kg / 4 persons S15: 1100 x 1400 mm 400 kg / 5 persons



**Gartec partner with Aritco -
the world leading homelift manufacturer.**

Aritco's journey started 20 years ago, with the simple idea of improving mobility everywhere. Today, you will find Aritco lifts in more than 30,000 buildings and private homes around the world.

Simplicity, quality and innovation are the common basis of everything Aritco does. They constantly seek new ways to improve, both when it comes to the product, environmental impact and quality, as well as through design and user friendliness.

All Aritco lifts are developed and produced in Kungsängen, Sweden, and maintain the highest quality in every detail, from design to installation in your home.

GARTEC
home

T +44 (0) 1296 769329 E sales@gartec.com W www.gartechome.com